

## Releasable Cable Ties - RCT



Quality Releasable cable tie manufactured from Nylon 66 (also known as nylon 6.6) means that they can be used more than once. They are ideal for work on prototypes, as they can be easily reopened to allow new wires and cables to be added to a bundle.

Releasable cable ties manufactured from Nylon 66 (also known as nylon 6.6) mean that they can be used more than once. They are ideal for work on prototypes, as they can be easily reopened to allow new wires and cables to be added to a bundle. Most commonly used for electrical cables or wires and are a one-piece, self-locking fastener. Functioning like straps to keep cables tidy, they're available in a range of sizes.

The design of a cable tie includes a head that provides the slot for the tape to be pulled through, to make a loop. The cable can be pulled through the slot until the preferred loop is achieved and then the excess cable can be cut off. A releasable cable tie incorporates a lever or button which lets you undo them when needed and reattach them at your convenience

These nylon cable ties should be an essential part of every toolkit. With our range, there are a variety of lengths and widths to suit all your needs.

### Features and Benefits:

- Releasable and reusable – released by operating the finger catch
- Easy to use and fast to install
- UL 94V-2 Flammability rating
- Suitable for a multitude of uses
- One-piece construction for consistent performance and reliability.

### Typical applications:

Cable ties are used as a type of fastener, for holding items together, primarily electrical cable or wire.

Easy to use and strong and because of this they can be found in many different industries for various uses:

Cable management

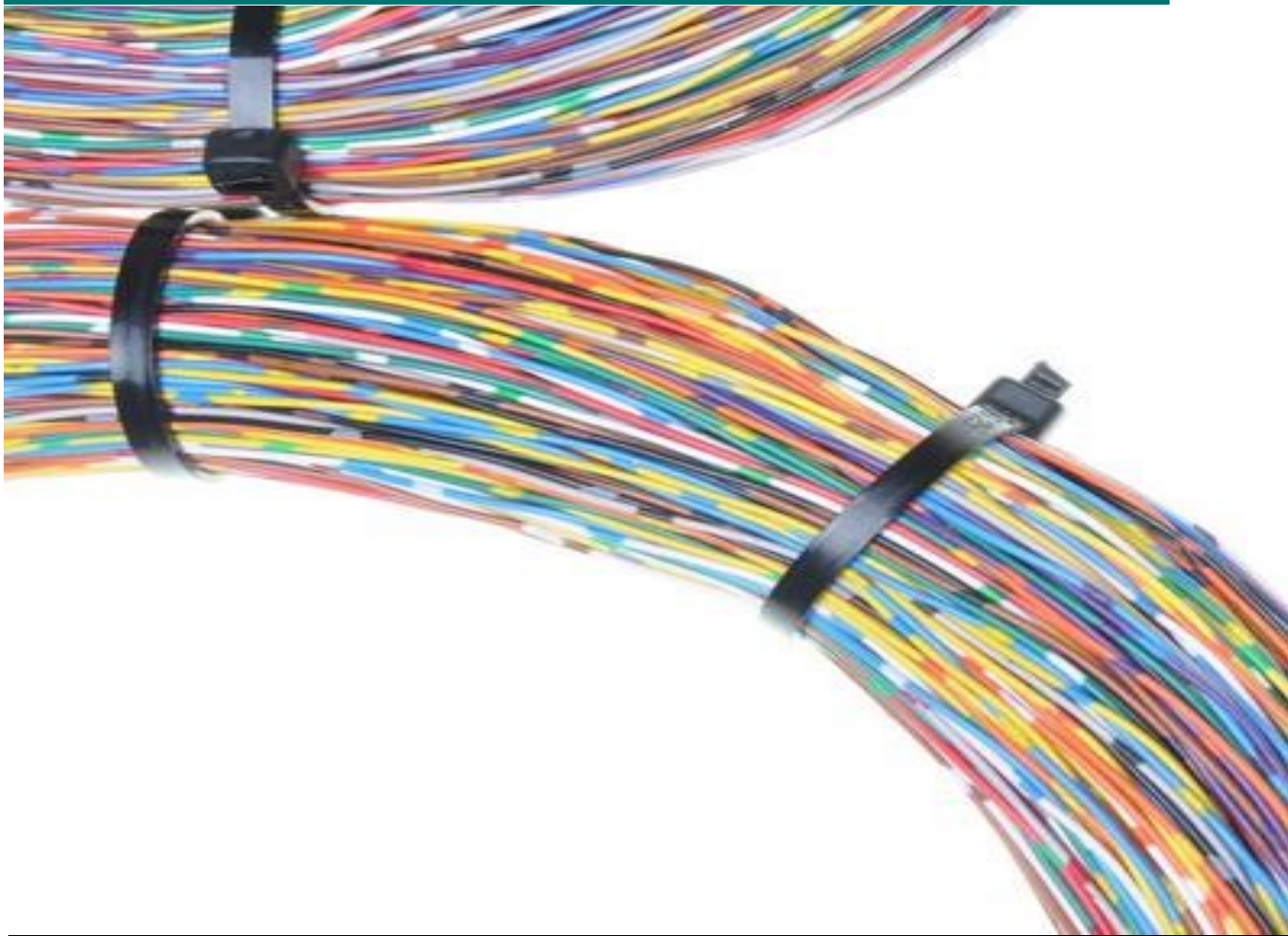
Home/DIY

Garden



## Releasable Cable Ties - RCT

# Releasable Cable Ties - RCT



| Part Number | Unit Of Measurement | Length | Width |
|-------------|---------------------|--------|-------|
| TR2         | mm                  | 100    | 3.6   |
| TR6B        | mm                  | 250    | 7.6   |
| TR8         | mm                  | 300    | 4.8   |
| TR7B        | mm                  | 360    | 7.5   |

