

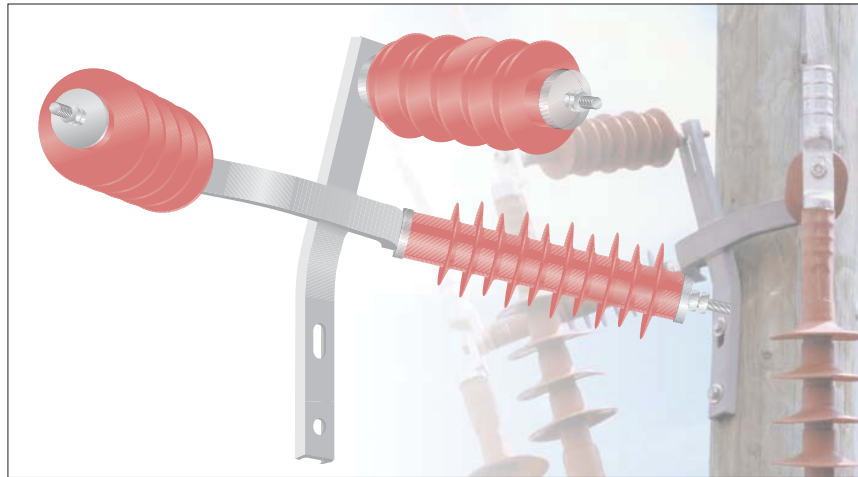
# Raychem Support Insulators and Brackets

## EAKT - 1520 Series mounting kits

### Support Insulators and Bracket

We also manufacture a range of hybrid insulators. The sheds of red, non tracking, flexible polymeric material are mounted on a porcelain core. Sets of three, along with a galvanised steel T-bracket, can be ordered for applications up to 36 kV either as separate kits by quoting the part number or with the termination by adding the mod code to the end.

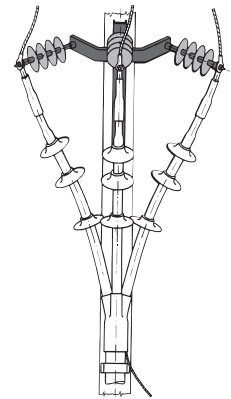
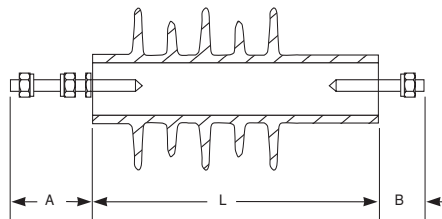
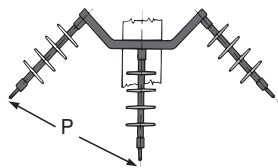
Reference standard IEC 60815,  
IEC 60071



Part Number	Mod Code	Description (pollution level IV)	(pollution level III)	(pollution level II)	(pollution level I)
EAKT 1521	B 21	Insulator Kits 12 kV		Insulator Kits 17.5 kV	Insulator Kits 24 kV
EAKT 1523	B 23	Insulator Kits 17.5 kV	Insulator Kits 24 kV		Insulator Kits 36 kV
EAKT 1524	B 24	Insulator Kits 24 kV Insulator Kits 36 kV			

#### Note:

The voltage is the highest phase-to-phase voltage  $U_{max}$



### Selection information (dimensions in inches/millimeters)

Catalog number	Voltage class (kV)	Insulator dimensions				No. of skirts	Min. creepage length	Mechanical capabilities (ft. lb)	
		P	L	A	B			Cantilever	Torque M12
EAKT 1521	15	12.5 (310)	7.6 (195)	2.6 (65)	1.4 (35)	5	15.4 (390)	184	37
EAKT 1523	25	17.0 (430)	12.0 (305)	2.6 (65)	1.4 (35)	9	2630(660)	184	37
EAKT 1524	35	22.0 (560)	15.0 (380)	2.6 (65)	1.4 (35)	11	43.3 (1100)	516	37