

MECHANICAL LUGS BLMT

FOR LOW AND MEDIUM VOLTAGE CABLE ACCESORIES UP TO 42 kV

KEY FEATURES

- Wide application range
- Compact design
- Can be used with almost every type of conductor and material
- Torque-controlled shear head bolts guarantee an excellent electrical contact
- Easy installation with standard socket spanner
- Pre-engineered design for perfect fit in medium voltage cable accessories up to 42 kV
- Tested according to IEC 61238-1 class A

TE Connectivity's (TE) mechanical lugs are designed for use in low and medium voltage applications.

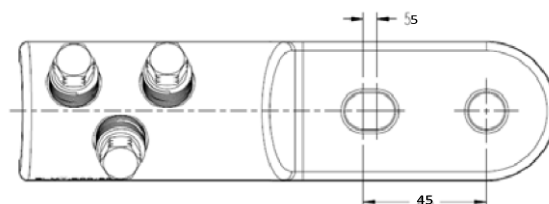
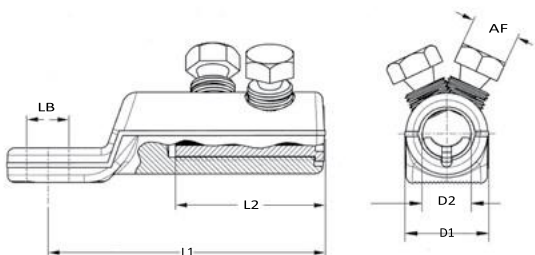
Three sizes of BLMT cover conductors ranging from 25 mm² to 400 mm². Our products consist of a tin-plated body, shear head bolts and inserts for small conductor sizes.

Made of special aluminium alloy, these contact bolts are double shear head bolts with hexagon heads. The bolts are treated with a highly lubricating agent. Contact bolts are irremovable once their heads have been sheared off. The lug body is made of a high-tensile, tin-plated aluminium alloy. The internal surface of the conductor holes are grooved.

Lugs are suitable for outdoor and indoor applications and are available with different palm hole sizes. The bolted fitting featured herein is developed specifically for use in medium voltage cable accessories up to 42 kV. They may also be used in the 1 kV range.

Before using mechanical lugs in cable accessories, confirm that they are suitable for the given application and if necessary, consult our experts.

Customers can count on consistent, high quality products, driven by TE's proven innovation and backed by our extraordinary customer support.





Lug with 2-holes palm

PRODUCT SELECTION INFORMATION								
Description	Cross Sectional Range (mm²)	Palm Hole Diameter (mm)	Dimensions (mm)				Contact Bolts Quantity	Head Size AF (mm)
			L1	L2	D1	D2		
BLMT-25/95-13	25 - 95	13	60	30	24	12,8	1	13
BLMT-25/95-17	25 - 95	17	60	30	24	12,8	1	13
BLMT-35/150-13	35 - 150	13	86	35	28	15,8	1	17
BLMT-35/150-17	35 - 150	17	86	35	28	15,8	1	17
BLMT-95/240-13	95 - 240	13	112	60	33	20	2	19
BLMT-95/240-17	95 - 240	17	112	60	33	20	2	19
BLMT-120/300-13	120 - 300	13	115	65	37	24	2	22
BLMT-120/300-17	120 - 300	17	115	65	37	24	2	22
BLMT-150/400 mk2-13	150-400	13	122	80	42	25,5	3	13
BLMT-150/400 mk2-17	150-400	17	122	80	42	25,5	3	13
BLMT-150/400 mk2-21	150-400	21	122	80	42	25,5	3	13
BLMT-150/400 mk2-2x13	150-400	2x13	122	80	42	25,5	3	13
BLMT-500/630 mk2-13	500-630	13	125	70	50	33	3	13
BLMT-500/630 mk2-17	500-630	17	125	70	50	33	3	13
BLMT-500/630 mk2-21	500-630	21	125	70	50	33	3	13
BLMT-500/630 mk2-2x13	500-630	2x13	125	70	50	33	3	13
BLMT-800/1000-17	800-1000	17	153	85	60	40	4	13
BLMT-800/1000-21	800-1000	21	153	85	60	40	4	13
BLMT-800/1000-2x13	800-1000	2x13	153	85	60	40	4	13