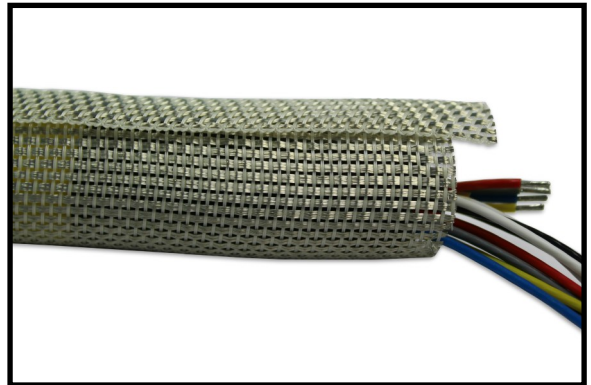


# EMI Self-Closing Shielding Wrap

Although specifically designed as a self-closing / retrofit sleeving for Cable & Hoses in situ, we also can provide a wide range of high quality nylon and stainless steel cable ties for additional fixing if so desired.

Mainly used in electric control cabinet, especially for railway control cabinet, it is used for shielding the electromagnetic interference. The split design is convenience for maintenance and overhaul.



With the Aramid Fibre properties this Over sleeve has Ultra-Strength and is Heat-resistant / Flame-resistant with a working temperature of -40°C to +150°C.

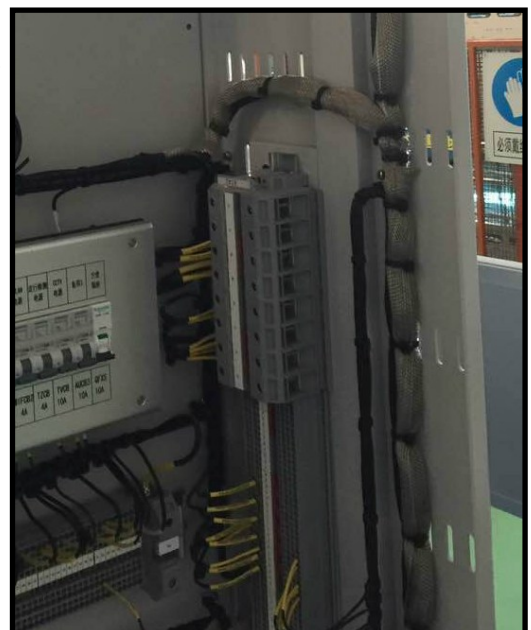
This wraparound's self wrapping, low profile and flexible design fits tightly to wire harnesses making it an ideal bundling solution in restricted areas without affecting the flexibility of the components it protects. Its inherent flexibility allows it to conform to irregular shapes and contours.

It allows for fast and easy building of wire and cable assemblies, it allows for easy breakouts and can be installed on completed assemblies due to its open design.

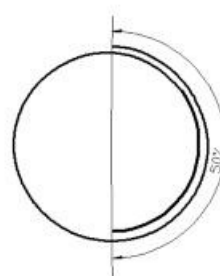
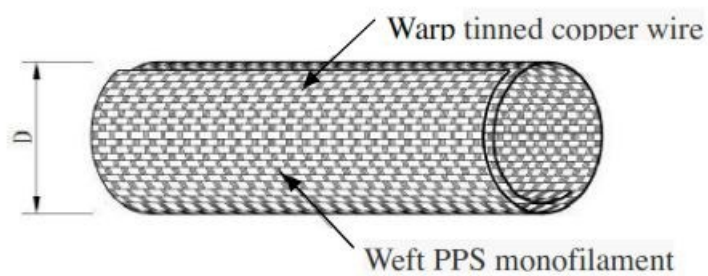
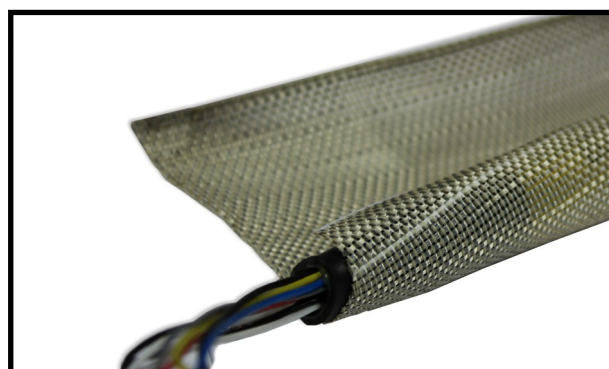
It provides flexibility, spring back and high resistance to abrasion. It is designed to protect wiring, cables, pipes, hoses and foam insulation from mechanical degradation arising from exposure to touch conditions in vibrating installations.

## Specification:

- Material: Tinned copper wire, aramid, polyester PPS
- Working temperature: -40°C to +150°C
- Melting point: 255° +/- 10°C
- Flammability: BS6853 Ia, NF F16 101 F1
- Shielding effectiveness: GB/T 30142-2013 GB/T 12190-2006
- Colour: Tinned



# EMI Self-Closing Shielding Wrap



I.D. D (MM)	Overlap %	Max. bundle range (mm)	Packing (M/Roll)
5.0	50%	6	100
8.0		9	100
10.0		11	100
13.0		14	50
16.0		17	50
19.0		20	25
25.0		27	25
29.0		31	25
32.0		34	25
38.0		40	25
50.0		52	25